



# MONTHLY MEMBERSHIP PROGRESS REPORT

Results as of: 3/31/2016

Multiple District 3

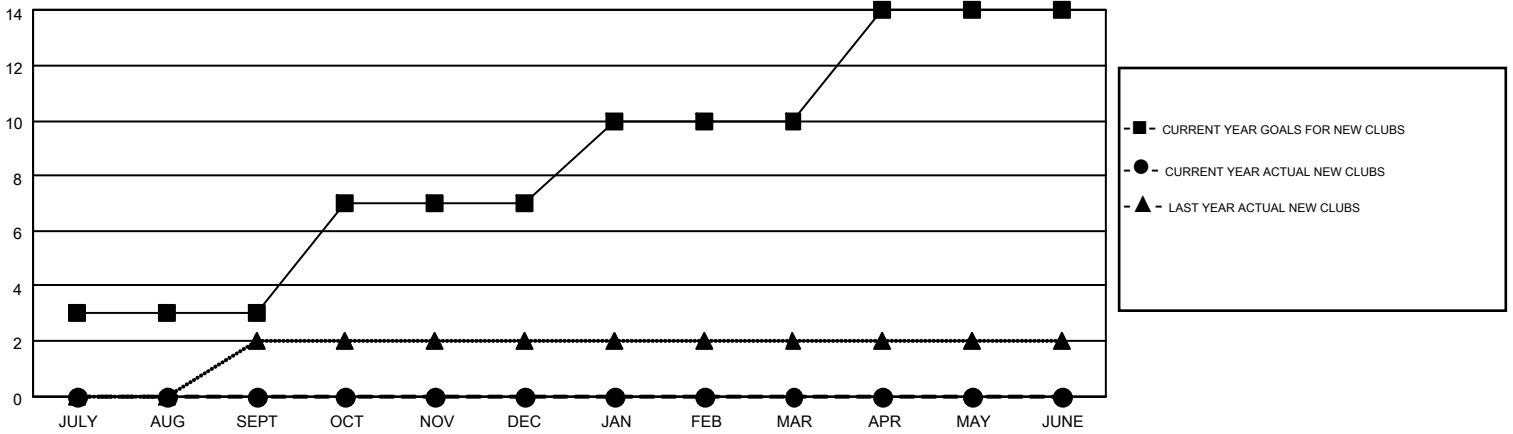
LOCATION: OKLAHOMA

GMT: HAL GRIFFIN

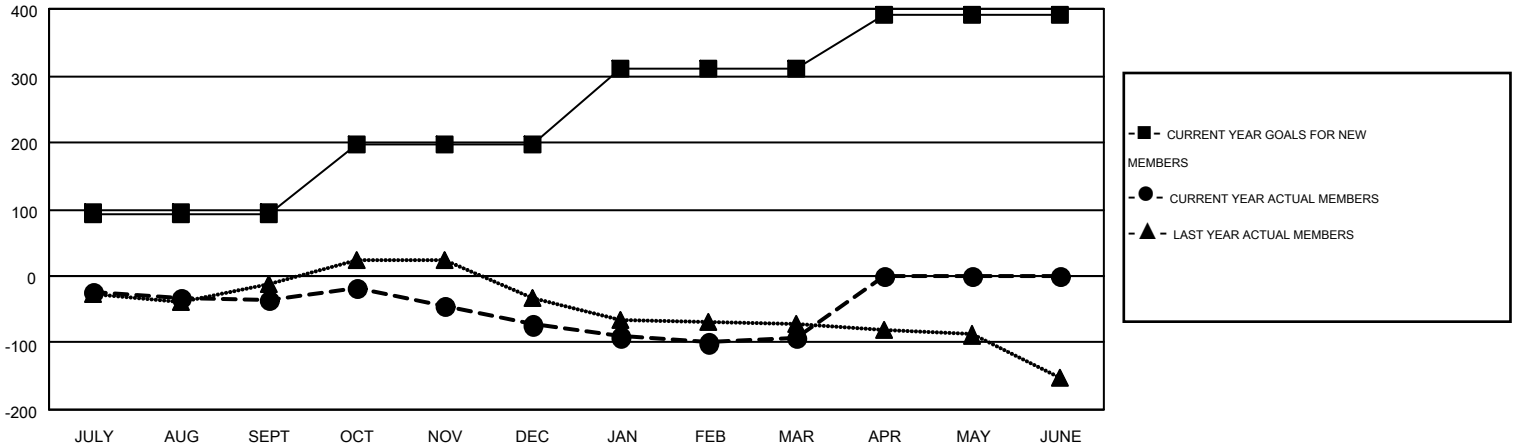
GMT CA 1

Clubs					Members				
RESULTS FOR 2015-2016					RESULTS FOR 2015-2016				
QUARTER	NEW CLUB GOAL	NEW CLUBS	DROPPED CLUBS	NET GAIN/LOSS	QUARTER	NEW MEMBER GOAL	CHARTER AND NEW MEMBERS ADDED	DROPPED MEMBERS	NET GAIN/LOSS
JULY/AUG/SEPT	3	0	0	0	JULY/AUG/SEPT	94	92	128	-36
OCT/NOV/DEC	4	0	2	-2	OCT/NOV/DEC	103	98	135	-37
JAN/FEB/MAR	3	0	0	0	JAN/FEB/MAR	114	97	116	-19
APR/MAY/JUNE	4	0	0	0	APR/MAY/JUNE	81	0	0	0

GOALS AND ACTUAL NEW CLUBS CUMULATIVE



GOALS AND ACTUAL MEMBERS CUMULATIVE



DROPPED CLUBS: 2	96 CLUBS OF 170 ADDED 1 OR MORE NEW MEMBERS	<u>GENDER DISTRIBUTION</u>	
		MALE	3,032 (70.76%)
<u>DROPPED MEMBERS</u>	<a href="#">CLICK HERE FOR HEALTH ASSESSMENT DATA</a>	FEMALE	1,253 (29.24%)
DECEASED		45	FAMILY UNIT MEMBERS
CLUB CANCELLED	25	HEAD OF HOUSEHOLD	310
OTHER	309	NON-HEAD OF HOUSEHOLD	323
<b>TOTAL</b>	<b>379</b>		